



ENERGY SOLUTIONS

Track Your Jobs, Your Labour and Your Assets... in real-time...in one system

In today's market conditions, organizations are now turning to new emerging technologies for managing/ tracking their assets, capture data in the field, and rely on data driven patterns to guide, identify KPI's in order to plan decisions. What if you could see all your data through a web based dashboard, avoid costly errors, track work and time during the drilling process; predict hazardous situations and risks that could have a negative impact on health, safety and the environment. Invoice your clients the same day as opposed to weeks from the time work is performed.

Bottom line: Leverage technology decisions to drive work based **efficiency, safety and profitability.**

Logistical & Planning Platform



For the energy industry, to help improve efficiency, logistical planning and reduction of costs associated with health and safety incidences.

Work Management & Field Data Capture



Digitally create and manage work and equipment orders – whether in the field or office



A map-based interface that enables users to view live operational and field data



A map-based interface that enables users to view, create, and manage information connected to geographic coordinates



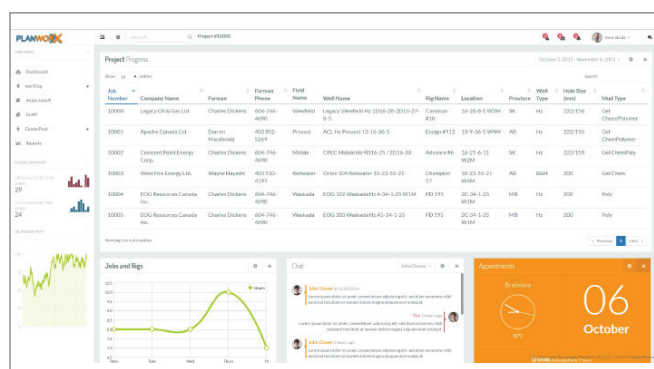
Achieving measurable improvements by developing customized industry specific solutions!



Based in Mission, BC – with offices in Calgary, i-Open is delivering solutions to Public and Private Customers across North America. Our leadership team has a solid track record with strong background in Data Integration, Enterprise Application Development and Spatial System Design. Our Solutions are based on known business needs with tangible benefits. Combining unparalleled experience, comprehensive capabilities across several industries and business functions, i-Open delivers leading edge solutions to some of North America's most successful companies – Bottom Line Business Process Automation of key Business Functions.

Professional Services

i-Open Professional Services offers project based services to maximize the business investment of its clients' IT investment through the delivery of risk informed and performance based strategies.



Application Development

Combining a solid understanding of business process analysis, process automation methodology, i-Open collaborates with its clients to develop state of the art applications, systems integration and ongoing maintenance services for Mobile, Browser, Desktop and Server based technologies.

Industry Solutions

i-Open assists private and public sector clients in a variety of industries and government organizations. We support clients by delivering a concentrated analysis of People, Processes and Technology as related to core business needs in order to achieve tangible and sustainable core objectives.



i-Open Technologies
7337 Welton Street
Mission, BC, V2V 3X1
1.877.256.7722

People... Process... Technology...

www.i-opentech.com